

## Brillenlupe ESCHENBACH®

Brillenlupe 2,0-fach - Anwendungsabstand 40 cm  
Leichtgewicht 49 g - Ausgleich von +/- 3,0 dpt

# ESCHENBACH

### **Binocular Loupes ESCHENBACH®**

Magnification 2x - distance of use 40 cm  
Light-weight 49 gr. - compensation +/- 3.0 dpt



Model	Description	Weight	Brand	Retail in €
E1624511	-7 Ausgleich von/Adjustment +/- 3,0 dpt	0,115 Kg	ESCHENBACH	93,00

TOP SELLER

## Taschenleuchteleupe ESCHENBACH®

"easyPocket"

**Illuminated Pocket Magnifier**  
**"mobilux LED" ESCHENBACH®**  
"easypocket"



E151110	-7 38 dpt - 10-fach Linse/Lense Ø 35 mm	0,18 Kg	ESCHENBACH	64,00
E151112	-7 50 dpt - 12,5-fach Linse/Lense Ø 35 mm	0,18 Kg	ESCHENBACH	68,00

## Diamantlupe ESCHENBACH®

Präzisions-Einschlaglupen, aplanatisch & achromatisch

### **Diamond Loupe ESCHENBACH®**

Precision folding magnifiers, aplanatic & achromatic



(A)



(B)



(C)



(D)

Model	Description	Casing	Weight	Brand	Retail in €
E117610	-7 (A) 10 x – Aplanatische Linse/Lens Ø 21 mm	Metall/Metal	0,045 Kg	ESCHENBACH	49,50
E118410	-7 (B) 10 x – Achromatische Linse /Lens 17mm	Metall/Metal	0,020 Kg	ESCHENBACH	73,00
E118420	-7 (C) 20 x – Achromatische Linse/Lens Ø 17 mm	Metall/Metal	0,050 Kg	ESCHENBACH	92,50
E11869	-7 (D) 3x+6x=9x – Achromatische Linse/Lens 23mm	Kunststoff/Plastics	0,020 Kg	ESCHENBACH	83,00

## Dreifach-Diamantlupen

### Triplet Diamond Loupes



Model	Description	Casing	Ø Linse/Visual Ø	Magnification	Retail in €
2008	-7 NIKON-Japan Triplet Loupe - aplanatic/achromatic	Kunststoff/Plastics	13 mm	10 X	59,90

## Original ZEISS® Diamantlupen Original ZEISS® Diamond Loupes

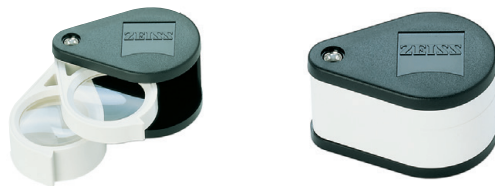


### D40 BLACK Edition

Exclusively by ERNST & FRIENDS



Model	Description	Ø Lens/Visual Ø	Magnification	Refractive Power	Retail in €
2014.40B	-5 <b>D 40 BLACK</b> - aplanatic/achromatic <b>TOP SELLER</b>	13 mm/22 mm	10 X	40 dpt	69,00



Model	Description	Ø Lens/Visual Ø	Magnification	Refractive Power	Retail in €
2014.36	-5 <b>Mod. D 36</b> - aplanatic/achromatic, double lens	22mm/32-52-127mm	9 x (6+3)	36 dpt (24+12)	105,00
2014.40	-5 <b>Mod. D 40</b> - aplanatic/achromatic <b>TOP SELLER</b>	13 mm/22 mm	10 x	40 dpt	75,00

## SCHNEIDER Dreifach-Diamantlupen SCHNEIDER Triplet Diamond Loupes



- Als weltweit beste Lupe für die Diamantgraduierung anerkannt!  
*Worldwide approved as the best loupe for diamond graduation!*
- „L2“ mit hervorragender Tiefenschärfe/  
*"L2" Excellent depth of focus!*



Model	Description	Ø Lens	Magnification	Retail in €
2013.S	-7A Schneider - S Triplet Loupe - aplanatic/achromatic	18 mm	10 X	195,00
2013.1	-7A Schneider - L1 Triplet Loupe - aplanatic/achromatic	20 mm	10 X	245,00
2013.2	-7A Schneider - L2 Triplet Loupe - aplanatic/achromatic <b>TOP SELLER</b>	20 mm	10 X	345,00

## Original PRAC-TEC® Fadenzähler Original PRAC-TEC® Line Testers



- Bikonvex Silikatlinse/ *biconvex silicate lens*
- Matt verchromtes Messing/ *dull chromed brass*



Model	Description	Ø Lens	Ø Window/mm	Refrac. Power	Retail in €	
2004.12	-5 <b>PRAC-TEC</b> Line Tester	12,5 mm	10 x 10	12 X	48 dpt	12,50
2004.10	-5 <b>PRAC-TEC</b> Line Tester	14,5 mm	15 x 15	10 X	40 dpt	15,00
2004.8	-5 <b>PRAC-TEC</b> Line Tester	17,5 mm	20 x 20	8 X	32 dpt	15,50